

PTA動向鋼珠定位螺杆 Movable Steel Ball Positioning Screw

材質:本體S45C鋼珠SUJ2

硬度:本體HRC35° 鋼珠HRC62°



PTA1



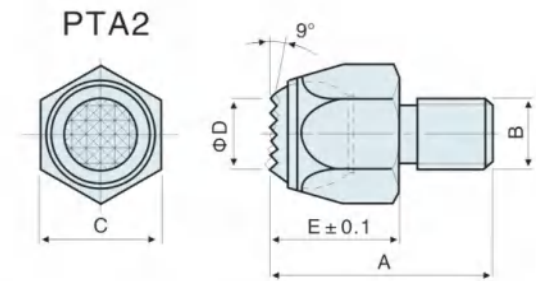
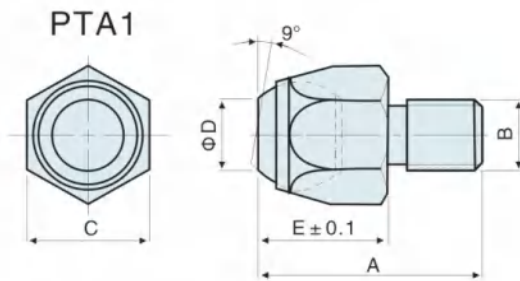
PTA2



PTA3

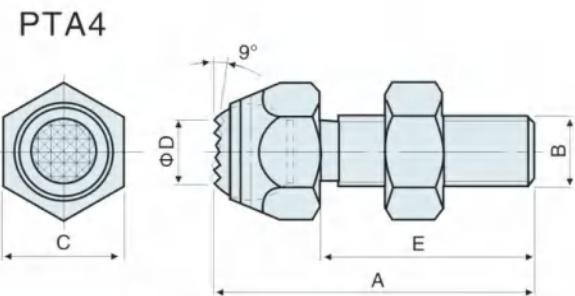
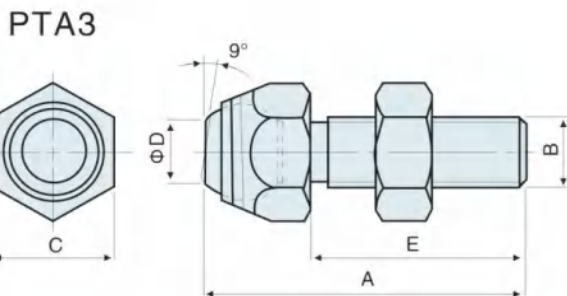


PTA4



MODEL	A	B	C	D	E	kg
PTA1-0006	21	M6×1.0	10	6	10	0.012
PTA1-0108	25	M8×1.25	14	8	12	0.015
PTA1-0210	30	M10×1.5	17	10	16	0.025
PTA1-0312	35	M12×1.75	22	12	22	0.070
PTA1-0416	42	M16×2.0	27	14	26	0.140
PTA1-0520	55	M20×2.5	36	14	27	0.280
PTA1-0624	65	M24×2.0	36	18	32	0.560
PTA1-0730	80	M30×2.0	46	21	35	0.880

MODEL	A	B	C	D	E	kg
PTA2-0006	21	M6×1.0	10	6	10	0.012
PTA2-0108	25	M8×1.25	14	8	12	0.015
PTA2-0210	30	M10×1.5	17	10	16	0.025
PTA2-0312	35	M12×1.75	22	12	22	0.070
PTA2-0416	42	M16×2.0	27	14	26	0.140
PTA2-0520	55	M20×2.5	36	14	27	0.280
PTA2-0624	65	M24×2.0	36	18	32	0.560
PTA2-0730	80	M30×2.0	46	21	35	0.880

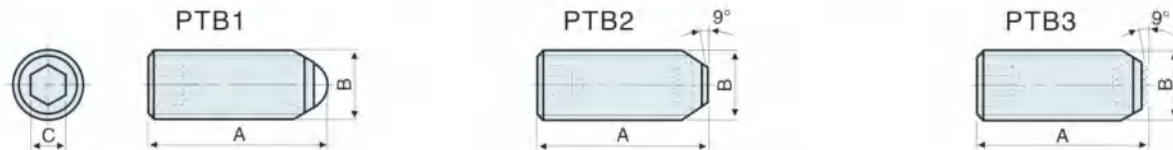


MODEL	A	B	C	D	E	kg
PTA3-0108	36	M8×1.25	14	7	25	0.025
PTA3-0210	45	M10×1.5	17	8	30	0.055
PTA3-0312	50	M12×1.75	17	10	35	0.055
PTA3-0416	60	M16×2.0	24	12	40	0.140
PTA3-0520	87	M20×2.5	36	14	60	0.330
PTA3-0624	98	M24×2.0	36	18	66	0.595
PTA3-0730	110	M30×2.0	46	21	75	1.030

MODEL	A	B	C	D	E	kg
PTA4-0108	36	M8×1.25	14	7	25	0.025
PTA4-0210	45	M10×1.5	17	8	30	0.055
PTA4-0312	50	M12×1.75	17	10	35	0.055
PTA4-0416	60	M16×2.0	24	12	40	0.140
PTA4-0520	87	M20×2.5	36	14	60	0.330
PTA4-0624	98	M24×2.0	36	18	66	0.595
PTA4-0730	110	M30×2.0	46	21	75	1.030

PTB動向鋼珠螺杆 Movable Steel Ball Screw

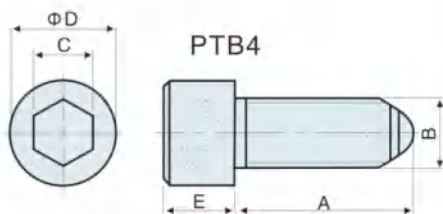
材質:本體SCM21鋼珠SUJ2
 硬度:本體HRC32° ~38° 鋼珠HRC62°



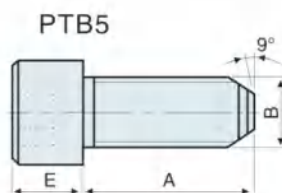
MODEL	A	B	C	kg
PTB1-0206	13.5	M6 × 1.0	3	0.0024
PTB1-0306	23.5	M6 × 1.0	3	0.0038
PTB1-0408	12	M8 × 1.25	4	0.0032
PTB1-0508	20	M8 × 1.25	4	0.0058
PTB1-0608	30	M8 × 1.25	4	0.0090
PTB1-0710	17	M10 × 1.5	5	0.0067
PTB1-0810	27	M10 × 1.5	5	0.0112
PTB1-0910	37	M10 × 1.5	5	0.0162
PTB1-1012	23.2	M12 × 1.75	6	0.0125
PTB1-1112	31.2	M12 × 1.75	6	0.0200
PTB1-1212	41.2	M12 × 1.75	6	0.0300
PTB1-1312	51.2	M12 × 1.75	6	0.0400
PTB1-1416	25.6	M16 × 2.0	8	0.0280
PTB1-1516	35.6	M16 × 2.0	8	0.0400
PTB1-1616	45.6	M16 × 2.0	8	0.0450
PTB1-1716	55.6	M16 × 2.0	8	0.0550
PTB1-1816	65.6	M16 × 2.0	8	0.0650

MODEL	A	B	C	kg
PTB2-2006	13	M6 × 1.0	3	0.0024
PTB2-2106	23	M6 × 1.0	3	0.0038
PTB2-2208	11.2	M8 × 1.25	4	0.0032
PTB2-2308	19.2	M8 × 1.25	4	0.0058
PTB2-2408	29.2	M8 × 1.25	4	0.0090
PTB2-2510	15	M10 × 1.5	5	0.0067
PTB2-2610	25	M10 × 1.5	5	0.0112
PTB2-2710	35	M10 × 1.5	5	0.0162
PTB2-2812	22	M12 × 1.75	6	0.0125
PTB2-2912	30	M12 × 1.75	6	0.0200
PTB2-3012	40	M12 × 1.75	6	0.0300
PTB2-3112	50	M12 × 1.75	6	0.0400
PTB2-3216	24	M16 × 2.0	8	0.0280
PTB2-3316	34	M16 × 2.0	8	0.0400
PTB2-3416	44	M16 × 2.0	8	0.0450
PTB2-3516	54	M16 × 2.0	8	0.0550
PTB2-3616	64	M16 × 2.0	8	0.0650

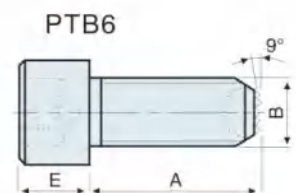
MODEL	A	B	C	kg
PTB3-3806	13	M6 × 1.0	3	0.0024
PTB3-3906	23	M6 × 1.0	3	0.0038
PTB3-4008	11.2	M8 × 1.25	4	0.0032
PTB3-4108	19.2	M8 × 1.25	4	0.0058
PTB3-4208	29.2	M8 × 1.25	4	0.0090
PTB3-4310	15	M10 × 1.5	5	0.0067
PTB3-4410	25	M10 × 1.5	5	0.0112
PTB3-4510	35	M10 × 1.5	5	0.0162
PTB3-4612	22	M12 × 1.75	6	0.0125
PTB3-4712	30	M12 × 1.75	6	0.0200
PTB3-4812	40	M12 × 1.75	6	0.0300
PTB3-4912	50	M12 × 1.75	6	0.0400
PTB3-5016	24	M16 × 2.0	8	0.0280
PTB3-5116	34	M16 × 2.0	8	0.0400
PTB3-5216	44	M16 × 2.0	8	0.0450
PTB3-5316	54	M16 × 2.0	8	0.0550
PTB3-5416	64	M16 × 2.0	8	0.0650



MODEL	A	B	C	D	E	kg
PTB4-0106	14.5	M6	5	10	6	0.0053
PTB4-0206	23.5	M6	5	10	6	0.0074
PTB4-0306	33.5	M6	5	10	6	0.0095
PTB4-0408	18.7	M8	6	13	8	0.0135
PTB4-0508	28.7	M8	6	13	8	0.0200
PTB4-0608	38.7	M8	6	13	8	0.0240
PTB4-0710	25	M10	8	16	10	0.0260
PTB4-0810	40	M10	8	16	10	0.0340
PTB4-0910	60	M10	8	16	10	0.0460
PTB4-1012	31.2	M12	10	18	12	0.0400
PTB4-1112	46.2	M12	10	18	12	0.0500
PTB4-1212	66.2	M12	10	18	12	0.0700
PTB4-1312	81.2	M12	10	18	12	0.0830
PTB4-1416	40.6	M16	14	24	16	0.0900
PTB4-1516	50.6	M16	14	24	16	0.1100
PTB4-1616	65.6	M16	14	24	16	0.1300
PTB4-1716	90.6	M16	14	24	16	0.1700



MODEL	A	B	C	D	E	kg
PTB5-1806	14	M6	5	10	6	0.0053
PTB5-1906	23	M6	5	10	6	0.0074
PTB5-2006	33	M6	5	10	6	0.0095
PTB5-2108	18	M8	6	13	8	0.0135
PTB5-2208	28	M8	6	13	8	0.0200
PTB5-2308	38	M8	6	13	8	0.0240
PTB5-2410	24	M10	8	16	10	0.0260
PTB5-2510	39	M10	8	16	10	0.0340
PTB5-2610	59	M10	8	16	10	0.0460
PTB5-2712	30	M12	10	18	12	0.0400
PTB5-2812	45	M12	10	18	12	0.0500
PTB5-2912	65	M12	10	18	12	0.0700
PTB5-3012	80	M12	10	18	12	0.0830
PTB5-3116	39	M16	14	24	16	0.0900
PTB5-3216	49	M16	14	24	16	0.1100
PTB5-3316	64	M16	14	24	16	0.1300
PTB5-3416	89	M16	14	24	16	0.1700



MODEL	A	B	C	D	E	kg
PTB6-3506	14	M6	5	10	6	0.0053
PTB6-3606	23	M6	5	10	6	0.0074
PTB6-3706	33	M6	5	10	6	0.0095
PTB6-3808	18	M8	6	13	8	0.0135
PTB6-3908	28	M8	6	13	8	0.0200
PTB6-4008	38	M8	6	13	8	0.0240
PTB6-4110	24	M10	8	16	10	0.0260
PTB6-4210	39	M10	8	16	10	0.0340
PTB6-4310	59	M10	8	16	10	0.0460
PTB6-4412	30	M12	10	18	12	0.0400
PTB6-4512	45	M12	10	18	12	0.0500
PTB6-4612	65	M12	10	18	12	0.0700
PTB6-4712	80	M12	10	18	12	0.0830
PTB6-4816	39	M16	14	24	16	0.0900
PTB6-4916	49	M16	14	24	16	0.1100
PTB6-5016	64	M16	14	24	16	0.1300
PTB6-5116	89	M16	14	24	16	0.1700

注: M6×1.0 M8×1.25 M10×1.5 M12×1.75 M16×2.0

PTC齒型螺桿 Tooth Type Screw

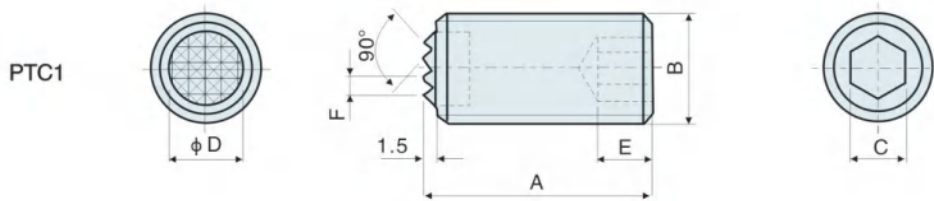
材質：本體S45C齒形SKH9
 硬度：本體HRC35° 齒形HRC60°



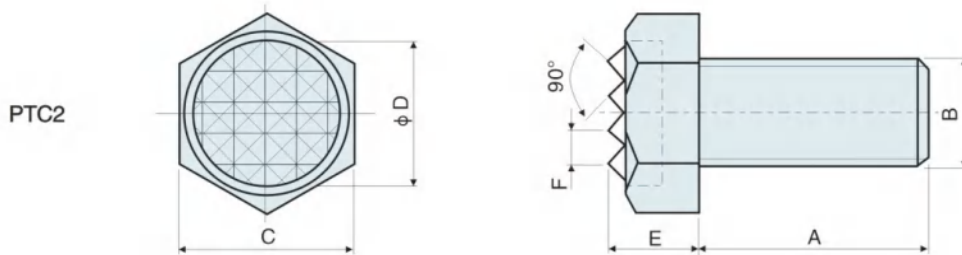
PTC1



PTC2



MODEL	A	B	C	D	E	R	Kg
PTC1-0110	25	M10x1.5	5	6.5	4	2.3	0.015
PTC1-0210	50	M10x1.5	5	6.5	5	2.3	0.030
PTC1-0312	25	M12x1.75	6	8	5	2.3	0.022
PTC1-0412	50	M12x1.75	6	8	5	2.3	0.045
PTC1-0516	25	M16x2.0	8	11.5	6	3	0.037
PTC1-0616	50	M16x2.0	8	11.5	6	3	0.078
PTC1-0720	25	M20x2.5	10	13	8	3	0.058
PTC1-0820	50	M20x2.5	10	13	8	3	0.120



MODEL	A	B	C	D	E	F	Kg
PTC2-0106	25	M6x1.0	10	7.9	6	2.3	0.008
PTC2-0208	25	M8x1.25	13	9.5	7.3	3	0.015
PTC2-0310	25	M10x1.5	17	12.7	8.4	3	0.030
PTC2-0410	40	M10x1.5	17	12.7	8.4	3	0.035
PTC2-0512	25	M12x1.75	19	15.9	9.5	3	0.035
PTC2-0612	40	M12x1.75	19	15.9	9.5	3	0.050
PTC2-0716	35	M16x2.0	24	19.1	12	3	0.085
PTC2-0816	50	M16x2.0	24	19.1	12	3	0.100
PTC2-0920	40	M20x2.5	30	25.4	14.5	3	0.160
PTC2-1020	60	M20x2.5	30	25.4	14.5	3	0.205

PTD支持件 Supporting Parts

PTD1 PTD2 PTD3 材質: SKH9硬度:HRC60°
 PTD4 PTD5 材質:本體SCM440 硬度:HRC60。



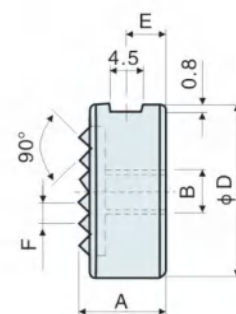
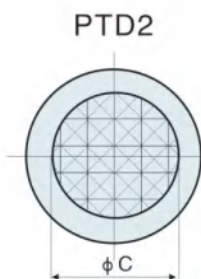
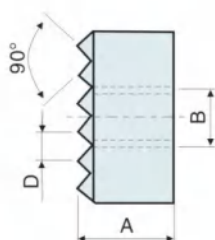
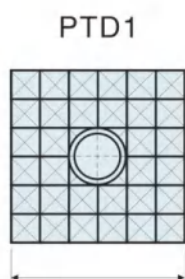
PTD1

PTD2

PTD3

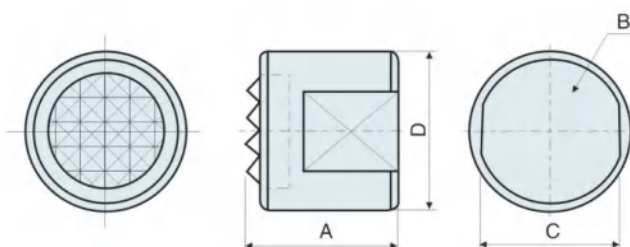
PTD4

PTD5



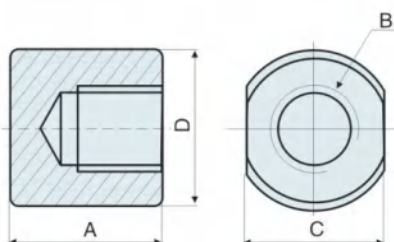
MODEL	A	B	C	D	Kg
PTD1-0110	10	M5x0.8	10	2.3	0.008
PTD1-0212	10	M6x1.0	12	3	0.010
PTD1-0320	10	M6x1.0	20	3	0.030
PTD1-0425	10	M6x1.0	25	3	0.043

MODEL	A	B	C	D	E	F	kg
PTD2-0110	10	M5x0.8	8.1	10	3.4	2.3	0.005
PTD2-0212	12	M6x1.0	9.6	12	4	3	0.008
PTD2-0316	12	M6x1.0	13	16	4	3	0.016
PTD2-0420	12	M6x1.0	16.3	20	4	3	0.025
PTD2-0525	12	M6x1.0	19.5	25	4	3	0.040



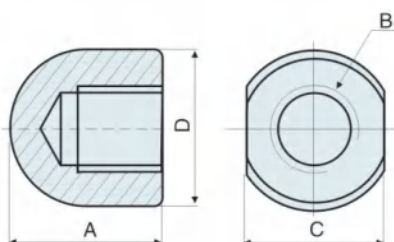
PTD3

MODEL	A	B	C	D	Kg
PTD3-0112	20	M12x1.75	19	22	0.043
PTD3-0216	25	M16x2.0	24	28	0.080



PTD4

MODEL	A	B	C	D	Kg
PTD4-0112	20	M12x1.75	19	22	0.043
PTD4-0216	25	M16x2.0	24	28	0.076



PTD5

MODEL	A	B	C	D	Kg
PTD5-0112	20	M12x1.75	19	22	0.042
PTD5-0216	25	M16x2.0	24	28	0.063